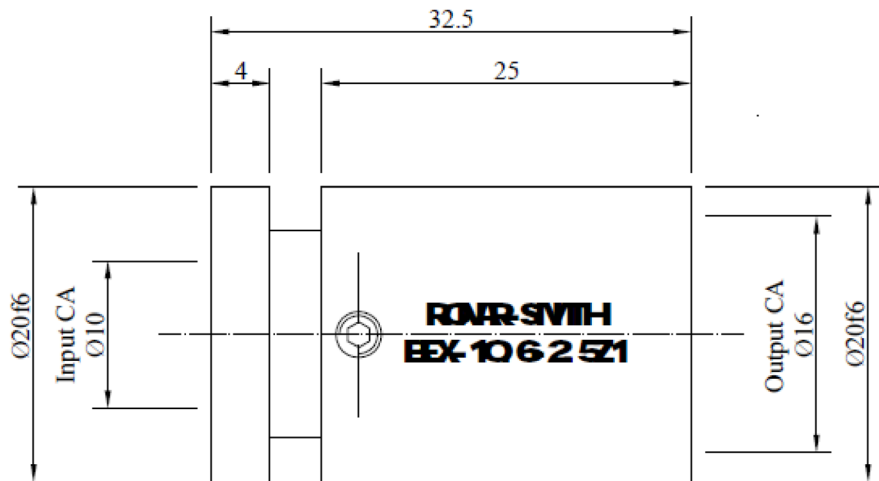




Model BEX-10.6-2.5Z1 Fixed Ratio CO2 Beam Expander with Focus Control

Fixed Ratio Beam Expander for CO2

The BEX-10.6-2.5Z1 2.5X Beam Expander for CO2 applications offers the laser system integrator superior performance and high quality in a flexible and reliable package.



Model # BEX-10.6-2.5Z1 Fixed Ratio 2.5X Beam Expander with Focus Control for 10.6um CO2 Applications

Model #	BEX-10.6-2.5Z1
Wavelength:	10.6um
Expansion Ratio:	2.5X
Input Beam Diameter:	10mm
Output Beam Diameter:	16mm
Damage Threshold:	$\geq 1\text{KW}/\text{cm}^2$, average power
Transmittance:	$\geq 95\%$

All dimensions in millimeters unless specified otherwise, specifications subject to change without notice.

BeamExpander.com LLC, Canton, MA, 02021 Tel: 781-255-1063